



Manual X-CURVE system allows for automatic continuous tracking of the object by the camera/photocamera during the movement of the cart.

Thanks to the X-CURVE system the object that is being filmed remains all the time in the centre of the frame.

Slidekamera manual X-CURVE system for HSK series sliders

Before you start your work with Slidekamera X-CURVE system we strongly recommend to read the manual carefully.

Please note that using the device in a manner inconsistent with the manual can cause damage or malfunction the manufacturer is not responsible for.

In case of damage during transport you are required to submit:

- ☒ proof of purchase
- ☒ protective styrofoam inserts/ fillers included in the set in case of new product delivery

If you fail to comply with the abovementioned conditions, the manufacturer reserves the right to refuse the complaint.

Photos of products may slightly differ from the actual product due to constant modifications and improvements introduced by the manufacturer.

1. Elements of X-CURVE system for HSK-5 series slider

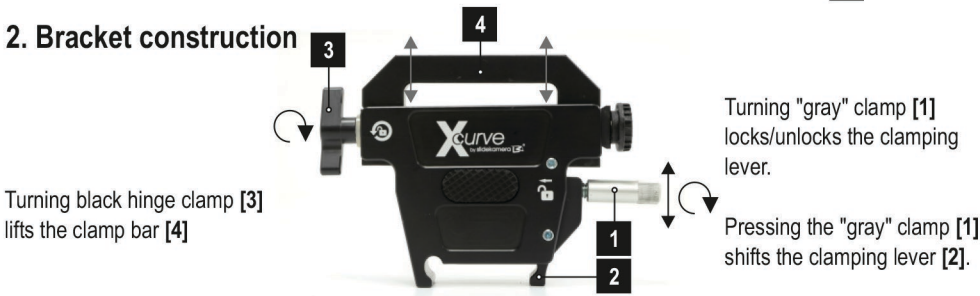
Once you receive the shipment please make sure that all the elements of Slidekamera X-CURVE system for HSK-5 series slider are inside.

Set includes:

- ☑ two aluminium brackets [1]
- ☑ rotational head equipped with special steel fixing rollers [2]
- ☑ angularly adjustable aluminium rail [3]
- ☑ user manual



2. Bracket construction



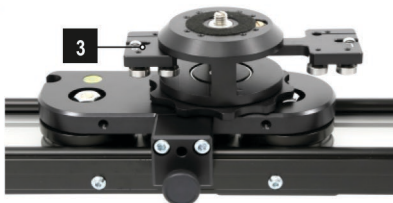
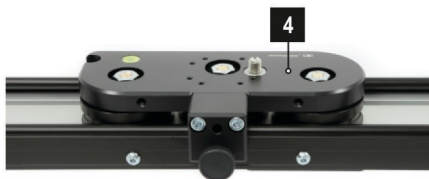
3. Mounting of X-CURVE system on HSK-5 series slider

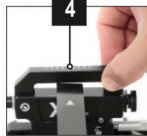
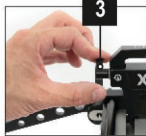
Loosen the "gray" clamp of the bracket [1], next by pressing the "gray" clamp unlock the clamping lever [2] that allows to attach the bracket to the slider rail. Lock the bracket by turning the "gray" clamp [1].

NOTE : You can place the bracket anywhere on the rail.



Attach X - CURVE rotational head [3] to the slider cart [4].





In order to set the guide rail [1], loosen the black hinge clamp [3] and lift the clamp bar [4] of the bracket.



Slide the aluminium guide rail [1] between the steel fixing rollers [5] of the rotational head. Then, slide the profile into the next bracket.

Aluminium guide rail position adjustment.

NOTE: Once you set the correct position of the rail lock it by turning the black hinge clamp.



4. Working with X-CURVE system

1. Place the object at a distance from the slider, preferably half the length of the slider, not less than 0,7m.
2. Position the cart in the middle of the slider and direct the lens to the object.
3. Move the cart to the side of the slider and loosen the clamps holding the aluminium guide rail.
4. Once the object is in the middle of the frame, lock the hinge clamp that sets the angular position of the aluminium rail.
5. Next, move the cart to the other side of the slider and proceed exactly in the same way as described above. When the calibration is properly performed, the filmed object remains all the time in the centre of the frame.



PLEASE NOTE: Slidekamera manual X-CURVE system for HSK series sliders can be mounted on all HSK-5 series sliders: 1000, 1500, 2000, anywhere on the slider rail. However, X-CURVE working length is 100cm.

5. Transport

Designed to be small in size, X-CURVE can be mounted to the slider during transport, there is no need to remove it before placing the slider into a cover.